

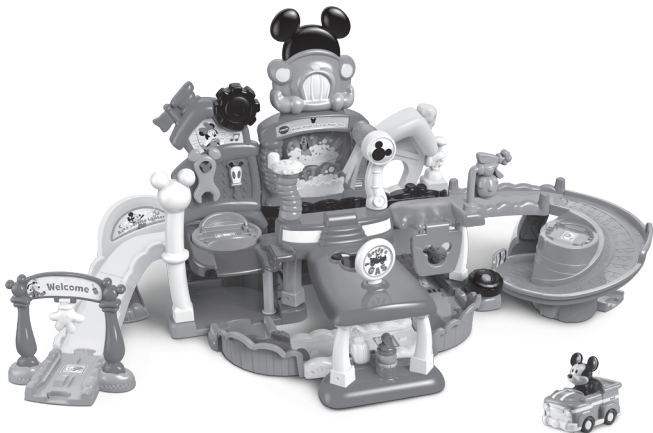
vtech®

Parent's Guide

Disney

Go!Go!
Smart Wheels®

Mickey Mouse Gas & Go Repair Shop



INTRODUCTION

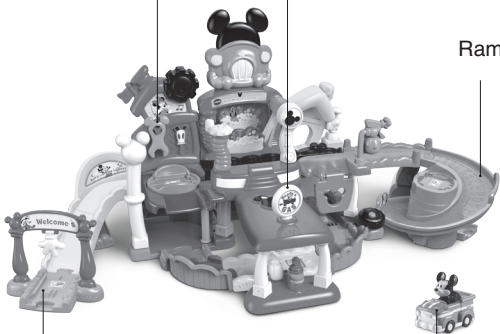
Thank you for purchasing the **Go! Go! Smart Wheels® Mickey Mouse Gas & Go Repair Shop!**

Stop at the gas station for a fill-up, drive through the car wash, and more while hearing Mickey Mouse say fun phrases to encourage play.

Wrench

Gas Station Sign

Ramp Track



Seven **SmartPoint®** Locations

SmartPoint® Mickey Mouse Truck

INCLUDED IN THIS PACKAGE



One **SmartPoint**[®]
Mickey Mouse Truck



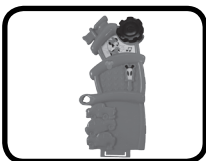
One car sign



One center back wall



One right back wall



One left back wall



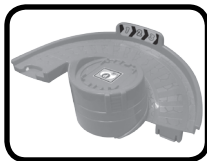
One left base



One right base



One spiral platform



One **SmartPoint**[®]
parking spot



One ramp track



One ramp track
support



One wrench



One welcome gate sign



One welcome gate



One **SmartPoint**[®] welcome gate track



One curved track



One curved track support



One downhill track



One pillar



One repair lift support



One left gas station support



One right gas station support



One garage support



One repair lift wall



One **SmartPoint**[®]
repair lift



One gas station
awning



One gas station sign



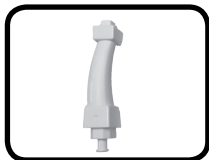
One gas station
base



One fuel nozzle



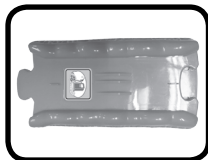
One fuel pump



One left gas station
base support



One right gas station
base support



One **SmartPoint**[®]
gas station track



One car wash
roller



One car wash
entrance



One spray paint
arm



One male
90-degree track



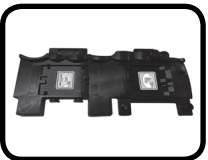
One female
90-degree track



One 1/4 straight
track



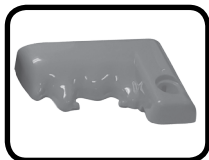
One male 1/4
straight track



One second level
base



One tire



One garage roof



One garage door



One label sheet

- Parent's guide

WARNING:

All packing materials such as tape, plastic sheets, packaging locks, removable tags, cable ties, cords, and packaging screws are not part of this toy and should be discarded for your child's safety.

NOTE:

Please keep this parent's guide as it contains important information.

Adult assembly required.**ATTENTION :**

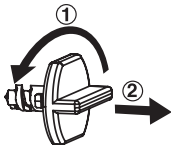
Pour la sécurité de votre enfant, débarrassez-vous de tous les produits d'emballage tels que rubans adhésifs, feuilles de plastique, attaches, étiquettes et vis d'emballage. Ils ne font pas partie du jouet.

NOTE :

Il est conseillé de conserver ce guide des parents car il comporte des informations importantes.

Ce jouet doit être assemblé par un adulte.**Unlock the packaging locks:**

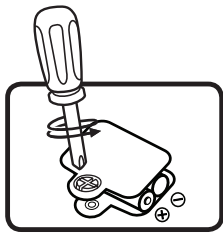
- ① Turn the packaging lock counterclockwise several times.
- ② Pull out the packaging lock and discard.



GETTING STARTED

Battery Removal and Installation Car

1. Make sure the unit is turned **OFF**.
2. Locate the battery cover on the bottom of the **Truck**, use a coin or screwdriver to loosen the screw and open the battery cover.
3. Remove old batteries by pulling up on one end of each battery.
4. Install 2 new AAA (AM-4/LR03) batteries following the diagram inside the battery box. (The use of new alkaline batteries is recommended for maximum performance.)
5. Replace the battery cover and tighten the screw to secure the battery cover.



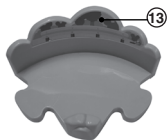
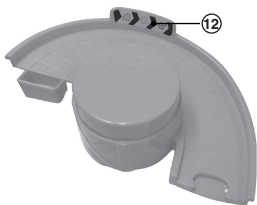
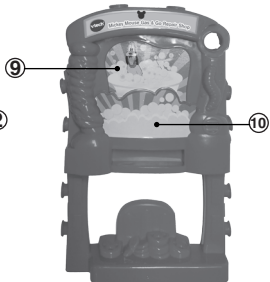
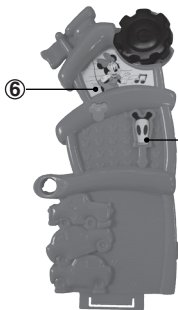
BATTERY NOTICE

- Use new alkaline batteries for maximum performance.
- Use only batteries of the same or equivalent type as recommended.
- Do not mix different types of batteries: alkaline, standard (carbon-zinc) or rechargeable, or new and used batteries.
- Do not use damaged batteries.
- Insert batteries with the correct polarity.
- Do not short-circuit the battery terminals.
- Remove exhausted batteries from the toy.
- Remove batteries during long periods of non-use.
- Do not dispose of batteries in fire.
- Do not charge non-rechargeable batteries.
- Remove rechargeable batteries from the toy before charging (if removable).
- Rechargeable batteries are only to be charged under adult supervision.

LABEL APPLICATION

Please securely stick the labels onto the playset as indicated below:



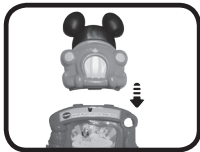


ASSEMBLY INSTRUCTIONS

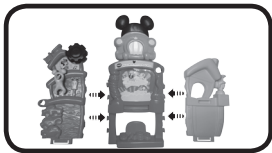
Mickey Mouse Gas & Go Repair Shop

With the **Go! Go! Smart Wheels® Mickey Mouse Gas & Go Repair Shop**, safety comes first. To ensure your child's safety, adult assembly is required.

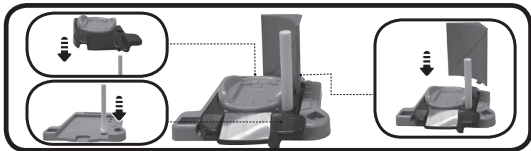
1. Connect the **Car Sign** to the **Center Back Wall**.



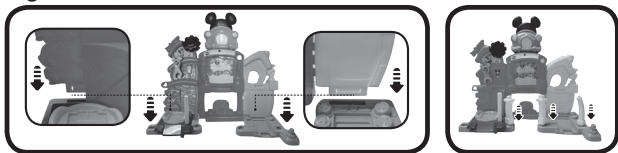
2. Attach both the **Left Back Wall** and the **Right Back Wall** to the **Center Back Wall**, as shown below. You may also hang the **Wrench** on the peg on the **Left Back Wall** at this time.



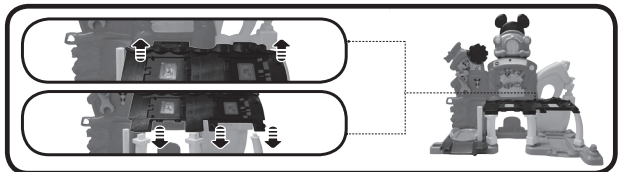
3. Insert the **Repair Lift Support**, **SmartPoint® Repair Lift** and **Repair Lift Wall** into the **Left Base**, as shown below.



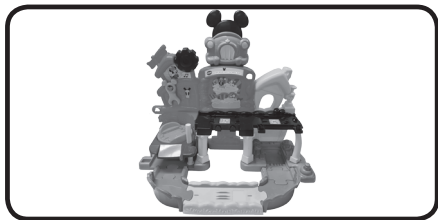
4. Insert the connected **Walls, Left Gas Station Support, Right Gas Station Support** and **Garage Support** into the **Left Base** and the **Right Base**, as shown below.



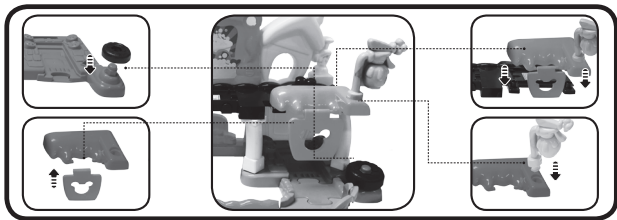
5. Attach the **Second Level Base** to the connected **Walls** and three **Supports**, as shown below.



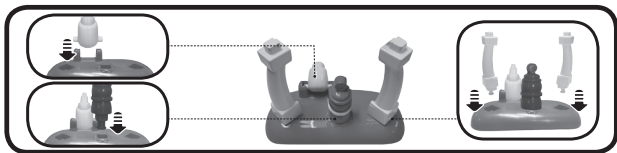
6. In order from left to right, connect the **1/4 Straight Track, Male 90-Degree Track, SmartPoint® Gas Station Track, Female 90-Degree Track** and **Male 1/4 Straight Track** together and connect to playset.



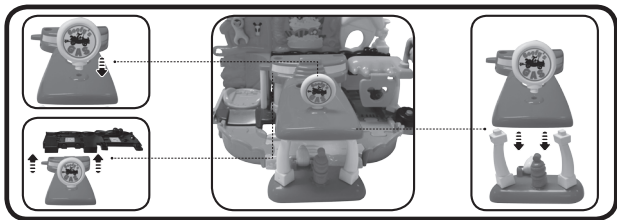
7. On the **Right Base** near the garage, attach the **Tire**, as shown below. Then, connect the **Garage Door** to the **Garage Roof**. Connect the **Garage Roof** to the **Second Level Base**. Connect the **Spray Paint Arm** to the **Garage Roof**.



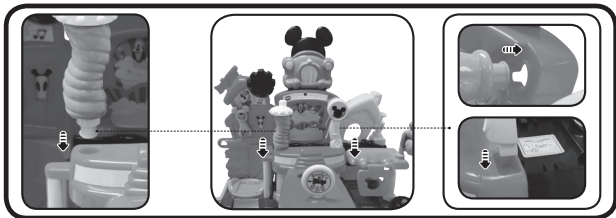
8. Insert the **Fuel Nozzle**, **Fuel Pump**, and both the **Left and Right Gas Station Base Supports** into the **Gas Station Base** as shown below.



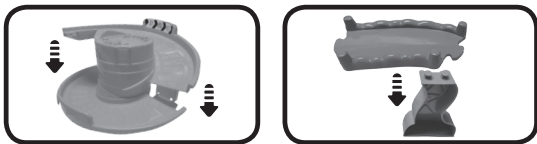
9. Connect the **Gas Station Sign** to the **Gas Station Awning**. Then, connect the **Gas Station Awning** to the **Gas Station Base** and the **Second Level Base**.



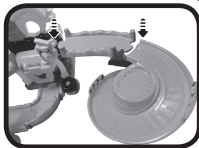
10. Insert the **Car Wash Roller** and the **Car Wash Entrance** into the **Gas Station Awning**.



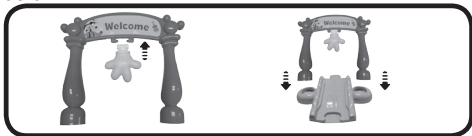
11. Attach the **SmartPoint® Parking Spot** to the **Spiral Platform** and insert the **Ramp Track Support** into the **Ramp Track**, as shown below.



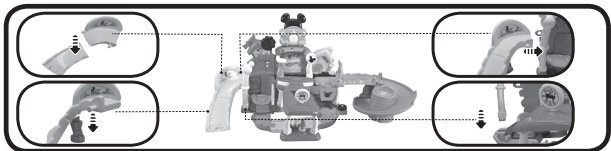
12. Connect the **Ramp Track** to the **Second Level Base** and **SmartPoint® Parking Spot** together, as shown below.



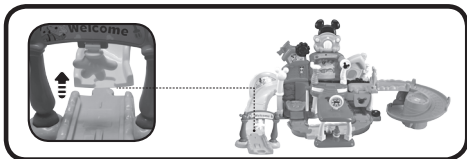
13. Attach the **Welcome Gate Sign** to the **Welcome Gate**, and insert the **Gate** into the **SmartPoint® Welcome Gate Track**, as shown below.



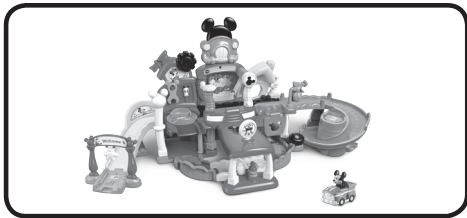
14. Insert the **Curved Track Support** into the **Curved Track**, the **Pillar** into the **Left Base**, and then connect the **Curved Track** to the **Left Back Wall** and **Pillar**, as shown below.



15. Connect the **Curved Track** and the **SmartPoint® Welcome Gate Track** with the **Downhill Track**, as shown below.

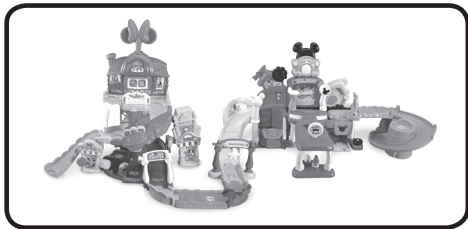


Once you've completed the above steps, you are ready to play! You can connect the playset to the included **SmartPoint®** track and other **Go! Go! Smart Wheels®** playsets and tracks (each sold separately).



EXPAND & EXPLORE



Connect to the **Go! Go! Smart Wheels® Minnie Mouse Around Town Playset** (as shown below) or other **Go! Go! Smart Wheels®** playsets (each sold separately) to expand the **Mickey Mouse Gas & Go Repair Shop** and inspire creativity.

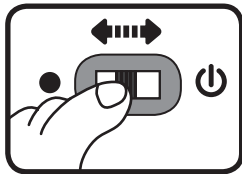


PRODUCT FEATURES

Truck

1. On/Off Switch

To turn the unit **On**, slide the **On/Off Switch** to the **On**  position. To turn the unit **Off**, slide the **On/Off Switch** to the **Off**  position.



2. Automatic Shut Off

To preserve battery life, the **Truck** will automatically power down after approximately 60 seconds without input. The unit can be turned on again by pressing Mickey Mouse, pushing the **Truck** quickly or triggering a **SmartPoint®** location.

NOTE: This product is in Try-Me mode in the packaging. After opening the package, turn the **Truck** off and on again to proceed with normal play. If the unit repeatedly powers down while playing, we suggest changing the batteries.

ACTIVITIES

Truck

1. Mickey Mouse Button

Press Mickey Mouse to hear sounds, songs and phrases. The lights will flash with sounds.



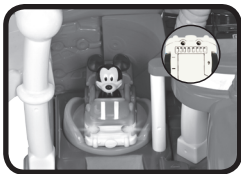
2. Sounds and Melodies

Push the **Truck** to hear fun sounds and melodies. While a melody is playing, push the truck again to add in fun sounds on top of the melody. The lights will flash with the sounds.



2. SmartPoint® Locations

For added fun, the **Truck** interacts with the **Go! Go! Smart Wheels® Mickey Mouse Gas & Go Repair Shop**. Simply place the **Truck** on one of the seven **SmartPoint®** locations to see the **Truck** lights flash and to hear fun sounds, short tunes and phrases. The **Truck** even interacts with other **Go! Go! Smart Wheels®** playsets (each sold separately).

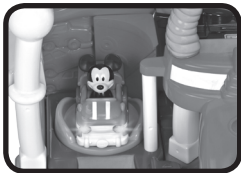


ACTIVITIES

Mickey Mouse Gas & Go Repair Shop

1. SmartPoint® Locations

Place the **Truck** or any **SmartPoint®** vehicle (each sold separately) on the seven **SmartPoint®** locations to trigger fun sounds and phrases.



2. Motor Skills

Put the **Truck** on the **SmartPoint®** **Repair Lift** to pretend to make repairs and then push the **Truck** to the **SmartPoint®** car wash and **SmartPoint®** paint station on the **Second Level** to trigger fun sounds and phrases.



SONG LYRICS

1. Take a drive down the road.
Say hello to the friends I know.
I can help, so call on me,
I use my truck to help my friends in need.
2. My truck can carry any load,
My tires can take any road.
3. My truck is tough, my truck is strong.
My truck can do any job.

MELODY LIST

1. “Billy Boy”
2. “Shoo Fly, Don’t Bother Me”
3. “Big Rock Candy Mountain”
4. “A-Hunting We Will Go”
5. “In the Good Old Summertime”
6. “Hickory Dickory Dock”

CARE & MAINTENANCE

1. Keep the unit clean by wiping it with a slightly damp cloth.
2. Keep the unit out of direct sunlight and away from any direct heat source.
3. Remove the batteries when the unit will not be in use for an extended period of time.
4. Do not drop the unit on hard surfaces and do not expose the unit to moisture or water.

TROUBLESHOOTING

If for some reason the unit stops working or malfunctions, please follow these steps:

1. Please turn the unit **OFF**.
2. Interrupt the power supply by removing the batteries.
3. Let the unit sit for a few minutes, then replace the batteries.
4. Turn the unit **ON**. The unit should now be ready to play again.
5. If the unit still does not work, replace with an entire set of new batteries.

If the problem persists, please call our “Consumer Services Department at 1-800-521-2010 in the U.S. or 1-877-352-8697 in Canada, or by going to our website at vtechkids.com and filling out our Contact Us form located under the Customer Support link. A service representative will be happy to help you.”

IMPORTANT NOTE:

Creating and developing **VTech®** products is accompanied by a responsibility that we at **VTech®** take very seriously. We make every effort to ensure the accuracy of the information, which forms the value of our products. However, errors sometimes can occur. It is important for you to know that we stand behind our products and encourage you to call our Consumer Services Department at 1-800-521-2010 in the U.S. or 1-877-352-8697 in Canada, or by going to our website at vtechkids.com and filling out our Contact Us form located under the Customer Support link, with any problems and/or suggestions that you might have. A service representative will be happy to help you.

Supplier's Declaration of Conformity 47 CFR § 2.1077 Compliance Information

Trade Name:	VTech®
Model:	5348
Product name:	Go! Go! Smart Wheels® Mickey Mouse Gas & Go Repair Shop
Responsible Party:	VTech Electronics North America, LLC
Address:	1156 W. Shure Drive, Suite 200, Arlington Heights, IL 60004
Website:	vtechkids.com

THIS DEVICE COMPLIES WITH PART 15 OF THE FCC RULES. OPERATION IS SUBJECT TO THE FOLLOWING TWO CONDITIONS: (1) THIS DEVICE MAY NOT CAUSE HARMFUL INTERFERENCE, AND (2) THIS DEVICE MUST ACCEPT ANY INTERFERENCE RECEIVED, INCLUDING INTERFERENCE THAT MAY CAUSE UNDESIRED OPERATION.

Note:

This equipment has been tested and found to comply with the limits for a Class B digital device, pursuant to Part 15 of the FCC Rules. These limits are designed to provide reasonable protection against harmful interference in a residential installation. This equipment generates uses and can radiate radio frequency energy and, if not installed and used in accordance with the instructions, may cause harmful interference to radio communications. However, there is no guarantee that interference will not occur in a particular installation. If this equipment does cause harmful interference to radio or television reception, which can be determined by turning the equipment off and on, the user is encouraged to try to correct the interference by one or more of the following measures:

- Reorient or relocate the receiving antenna.
- Increase the separation between the equipment and receiver.
- Connect the equipment into an outlet on a circuit different from that to which the receiver is connected.
- Consult the dealer or an experienced radio/TV technician for help.

Caution: Changes or modifications not expressly approved by the party responsible for compliance could void the user's authority to operate the equipment.

**Visit our website for more
information about our products,
downloads, resources and more.**

vtechkids.com

Read our complete warranty policy online at
vtechkids.com/warranty

